

airWallet

Installation Guide AWR202

Bluetooth Operated Controller



Guide to install Airwallet AWR202

Technical specifications	
Part number:	AWR202
Power Supply Voltage:	100-240V AC / 50 Hz
Relay:	2 pol. No-voltage
Max. load:	16 Amp co.
Dimensions:	200 x 150 x 75 mm
Protection class:	IP 65
Operational temperature:	0° to 40°C

Installation Guide

- Open the product and remove the printed circuit board
- Drill holes to cable glands
- Mount the box on a nearby wall or similar and secure the printed circuit board in the box again
- Connect the wires to the cable terminals - The terminals can be unplugged for an easier install
- See page 3 for wire terminal specifications

Test the installation

The device may not be used the first 30 seconds after connecting it to a power source. The product uses 10 seconds to boot up and uses the next 20 seconds to perform a power consumption measurement to calibrate the regular standby power of the machines. The device uses this information, to decide when to make the products available again after a purchase.

The installation can be tested by downloading the app 'Airwallet' from App Store or Google Play. Create a new user, and you can now choose the machines you want to test. Push the button 'Open door' to send the machine a 1 min. start pulse. The added card will not be used in this test.

If you are installing multiple Airwallet payment systems you can be granted a Airwallet test user, carrying full functionality, without credit card withdrawals. All transactions are still documented and can be controlled by the account administrator.

If the device is setup to perform power consumption measurements (fixed price) the device will have a cool-down time of 10 minutes from the machine stops till the product can be purchased again.

If your device is not setup yet

If your Airwallet R1 is not already setup, it can be setup on airwallet.dk by creating a new account and filling in your company informations. Subsequently a location can be created under the tab 'My Locations' and the serial number can be entered. When the serial number has been entered you can fill out the specifications for each installed machine. On this account you can also oversee revenue, when you are disbursed next month, change prices or names on your devices.

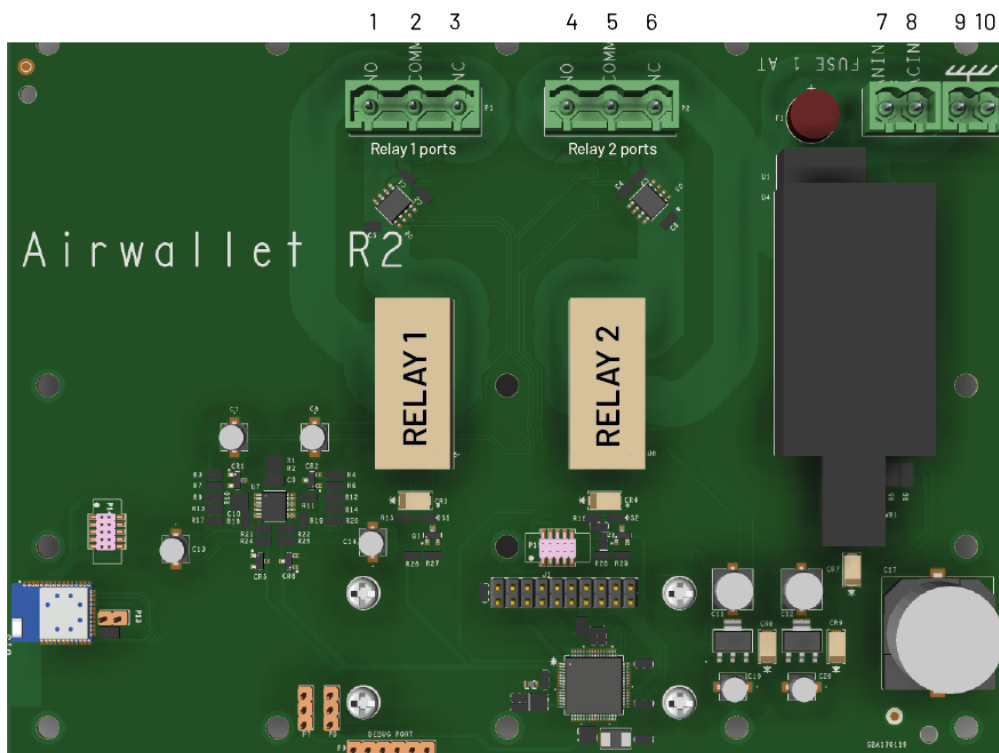


ILLUSTRATION OF AIRWALLET PCB WITH RELAY 1 AND 2 MARKED

Wire Terminal Specification		
Terminal	Name	Function
1	Relay 1 NO	Max. 16A, 250V
2	Relay 1 Common	Max. 16A, 250V
3	Relay 1 NC	Max. 16A, 250V
4	Relay 2 NO	Max. 16A, 250V
5	Relay 2 Common	Max. 16A, 250V
6	Relay 2 NC	Max. 16A, 250V
7	L IN 100-240V AC	Power Supply Phase
8	N IN 100-240V AC	Power Supply Null
9	PE	Protective earth conductor assembly
10	PE	Protective earth conductor assembly

Declaration of Conformity

Manufacturer: Airwallet

Address: Klostervej 27B 3. Floor left. 5000 Odense, Denmark

Product description: Bluetooth operated controller

Product name: Airwallet R2

Declaration:

We declare under our sole responsibility that the products, to which this declaration relates, are in conformity with the Council Directives on the approximation of the laws of the EU Member States relating to the following:

Directives:

Radio Equipment Directive 2014/53/EU
RoHS Directive 2011/65/EU

And

Standards:

RED-Directive 2014/53/EU
Concerning RED article 3.2: EN 300 328 v2.1.1 (2016-11)

Concerning RED article 3.1a: EN 60950-1:2006 +A11:2009 +A1:2010 +A12:2011 +A2:2013
and EN 62311:2008 and EN 62479:2010

Concerning RED article 3.1b: EN 301 489-1 v2.2.0 (2017-03) and EN 301 489-17 v3.2.0
(2017-03), EN 61000-6-1:2007, EN 61000-6-3:2007 with Amd. 1:2011

RoHS Directive 2011/65/EU

EN 50581:2012: Technical documentation for the assessment of the electrical and
electronic products with respect to the restriction of hazardous substances.

Place of issue: Airwallet, Cortex Park 26, Odense 5230, Denmark

Date of issue: 10.10.2019

Name of Authorised Person:

Christian Bonde Mortensen
Co-Founder

Signature of Authorised Person:

Christian B. Mortensen